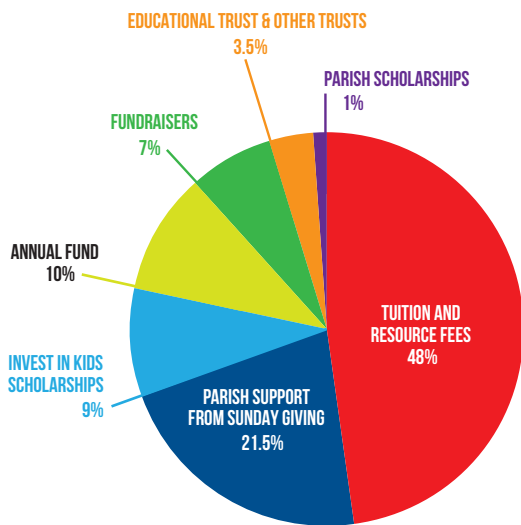


# ST. ANTHONY SCHOOLS FUNDING

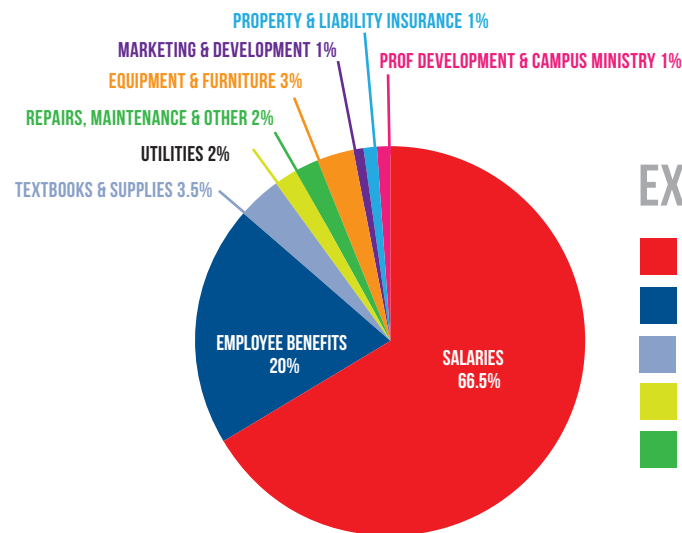
*at a glance*



## INCOME SOURCES

TUITION & RESOURCE FEES	\$2,246,471
PARISH SUPPORT FROM SUNDAY GIVING	\$990,615
INVEST IN KIDS SCHOLARSHIPS	\$417,434
ANNUAL FUND	\$450,000
FUNDRAISERS	\$322,000
EDUCATIONAL TRUST & OTHER TRUSTS	\$150,000
PARISH SCHOLARSHIPS	\$23,665

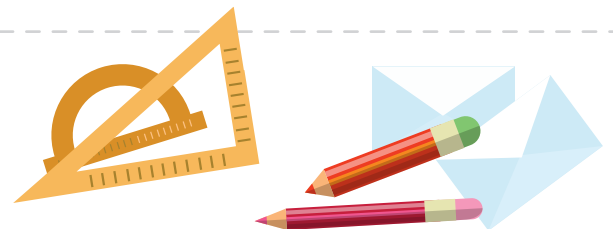
TOTAL INCOME \$4,600,185



## EXPENSES

SALARIES	\$3,060,914
EMPLOYEE BENEFITS	\$922,874
TEXTBOOKS & SUPPLIES	\$160,434
UTILITIES	\$105,830
REPAIRS, MAINTENANCE & OTHER	\$104,582
EQUIPMENT & TECHNOLOGY	\$122,480
MARKETING & DEVELOPMENT	\$38,000
PROPERTY & LIABILITY INSURANCE	\$46,746
PROF DEVELOPMENT & CAMPUS MINISTRY	\$38,325

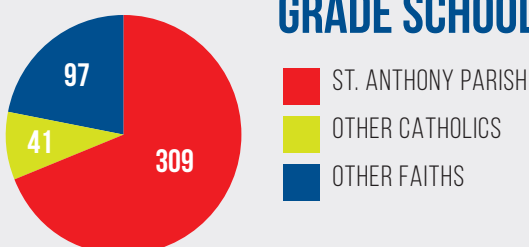
TOTAL EXPENSES: \$4,600,185



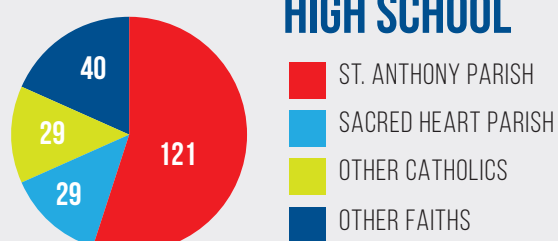
## STUDENT POPULATION BREAKDOWN



### GRADE SCHOOL



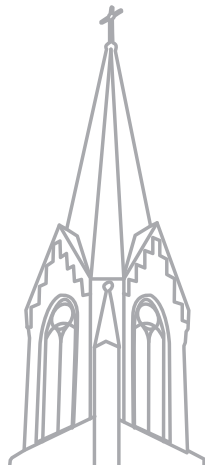
### HIGH SCHOOL



# WHAT WE DO *to keep tuition low*

## 1 PARISH SUPPORT

Funds collected during Church on Sunday comprise 21.5% of the Schools' budget and help offset tuition costs.



## 2 SCHOLARSHIPS & TUITION ASSISTANCE

Last year, 28% of families at St. Anthony received scholarship assistance.



## 3 ANNUAL FUND

100% of Annual Fund gifts stay at St. Anthony Schools and are added directly to the schools' operating budget.



## 4 FUNDRAISING

Ongoing fundraisers which benefit St. Anthony Schools include the Corvette Raffle and Parish Picnic.



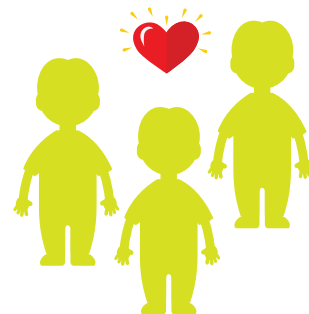
## 5 EDUCATIONAL TRUST

The St. Anthony Catholic Church Educational Trust exists for the long-term benefit of St. Anthony Schools. Trust contributions are invested in bond funds, cash, life insurance, securities and mutual funds. Trust distributions are made directly to St. Anthony Schools.



## 6 VOLUNTEERISM

Volunteers keep overall operating costs at St. Anthony Schools low. If volunteers didn't offer their services, we would have to pay for the same work to be done. This would cause our per student costs to increase, and in turn lead to an increase in tuition.



## OUR EFFORTS ARE WORKING!

We have been able to reduce tuition increases over the past decade. We hope to continue lowering the average yearly tuition increase.



**10%** 2000-2010  
AVERAGE YEARLY  
INCREASE

**4.2%** 2010-2020  
AVERAGE YEARLY  
INCREASE

**2.6%** 2020-2024  
AVERAGE YEARLY  
INCREASE